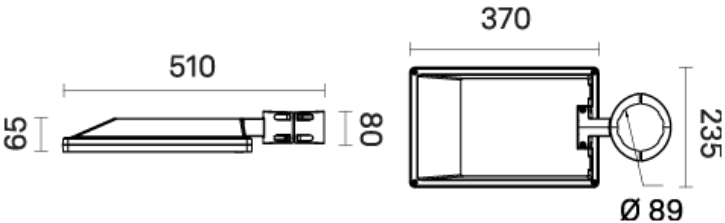


Pixis Lateral | Luminaire | Pixis Lateral Street



Ordering Information / Guide

Example: **LUPIX01-U-D25-827-L025-ST-V0-F35-MU-CN0**

Optique	Ra+K	Luminous flux	Screen finish	Power supply	Driver Function	ISO Class	Finish
D25 T2 narrow	827 Ra80 2700 K	L015 1500 lm	ST Transparent	V0 120V-277V	F35 0-10V+CLO	MU UL	CN0 Grey [Neri] Textured
D37 T3 medium	830 Ra80 3000 K	L025 2500 lm			F51 DT8 + CLO		
D59 T3 medium + BLC	840 Ra80 4000 K	L035 3500 lm					
D24 T4 wide	8T2 Ra80 TW 2200-4000 K	L040 4000 lm					
D58 T4 wide + BLC		L045 4500 lm					
D18 Type V - B		L060 6000 lm					
		L075 7500 lm					

Generated code: **LUPIX01 - U** - _ _ _ - _ _ _ - _ _ _ - _ _ _ - _ _ _ - _ _ _ - _ _ _ - _ _ _

Pixis Lateral | Luminaire | Pixis Lateral Street

SOURCE

High-power LED matrix.

Standard Deviation Colour Matching ≤5

LIGHTING CHARACTERISTICS

Modular 2x2 refractive lenses in PMMA.

MECHANICAL CHARACTERISTICS

Structure with a base and body made of die-cast aluminum (UNI EN 1706) and a lower frame openable for access to the auxiliary compartment. Protective shield in extra-clear tempered glass with IK10 impact resistance (EN 62262) and diffusing plastic adhesive film (code 9565.620.267). Integrated heat sink in die-cast aluminum, internal black reflector in PC, silicone seal between lower frame and upper cover, and compartment prepared for additional surge protectors or remote monitoring systems. Stainless steel screws.

INSTALLATION

Suitable for side mounting on Ø 3-1/2" tubes.

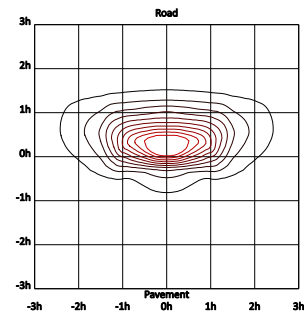
WARNINGS

Luminaire designed for disposal/recycling at end-of-life.
Replaceable (LED only) light source by a professional.
Replaceable control gear by a professional.
Protection of surfaces: please refer to the specification on painting procedures of the materials.

Pixis Lateral | Luminaire | Pixis Lateral Street

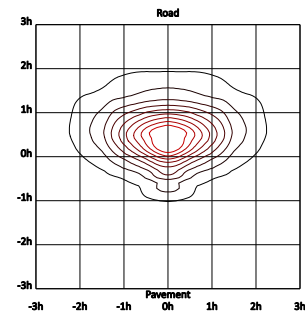
T2 narrow

Transparent



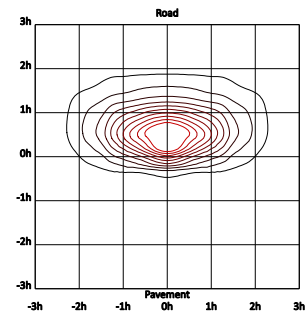
T3 medium

Transparent



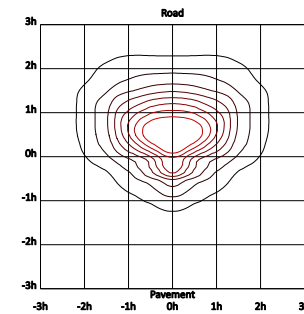
T3 medium + BLC

Transparent



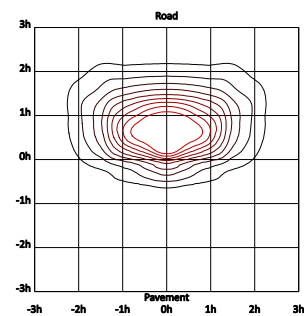
T4 wide

Transparent



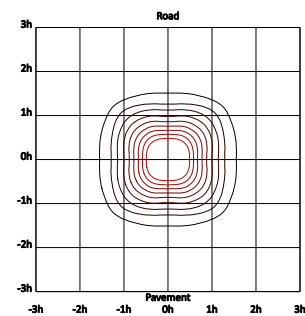
T4 wide + BLC

Transparent



Type V - B

Transparent



Pixis Lateral | Luminaire | Pixis Lateral Street

Luminous Flux	Nominal CCT	W	lm/W	n° led	Optic	Screen	BUG		
2500 lm	2700 K	23.9	105	16	T4 wide	Transparent	1	0	1
2500 lm	2700 K	23.9	105	16	T2 narrow	Transparent	1	0	1
2500 lm	2700 K	23.9	105	16	T3 medium	Transparent	1	0	0
2500 lm	2700 K	20.1	124	16	Type V - B	Transparent	1	0	0
2500 lm	2700 K	32.2	78	16	T4 wide + BLC	Transparent	0	0	0
2500 lm	2700 K	32.2	78	16	T3 medium + BLC	Transparent	0	0	0
2500 lm	3000 K	22.8	110	16	T4 wide	Transparent	1	0	1
2500 lm	3000 K	22.8	110	16	T2 narrow	Transparent	1	0	1
2500 lm	3000 K	22.8	110	16	T3 medium	Transparent	1	0	0
2500 lm	3000 K	19	132	16	Type V - B	Transparent	1	0	0
2500 lm	3000 K	30.5	82	16	T4 wide + BLC	Transparent	0	0	0
2500 lm	3000 K	30.5	82	16	T3 medium + BLC	Transparent	0	0	0
2500 lm	4000 K	21.5	116	16	T4 wide	Transparent	1	0	1
2500 lm	4000 K	21.5	116	16	T2 narrow	Transparent	1	0	1
2500 lm	4000 K	21.5	116	16	T3 medium	Transparent	1	0	0
2500 lm	4000 K	18.1	138	16	Type V - B	Transparent	1	0	0
2500 lm	4000 K	28.9	87	16	T4 wide + BLC	Transparent	0	0	0
2500 lm	4000 K	28.9	87	16	T3 medium + BLC	Transparent	0	0	0
3500 lm	2700 K	34.6	101	16	T4 wide	Transparent	1	0	1
3500 lm	2700 K	34.6	101	16	T2 narrow	Transparent	1	0	1
3500 lm	2700 K	34.6	101	16	T3 medium	Transparent	1	0	1
3500 lm	2700 K	28.9	121	16	Type V - B	Transparent	2	0	0
3500 lm	2700 K	44	80	24	T4 wide + BLC	Transparent	1	0	1
3500 lm	2700 K	44	80	24	T3 medium + BLC	Transparent	1	0	1
3500 lm	3000 K	32.7	107	16	T4 wide	Transparent	1	0	1
3500 lm	3000 K	32.7	107	16	T2 narrow	Transparent	1	0	1
3500 lm	3000 K	32.7	107	16	T3 medium	Transparent	1	0	1
3500 lm	3000 K	27.3	128	16	Type V - B	Transparent	2	0	0
3500 lm	3000 K	44.4	79	16	T4 wide + BLC	Transparent	1	0	1
3500 lm	3000 K	44.4	79	16	T3 medium + BLC	Transparent	1	0	1
3500 lm	4000 K	31	113	16	T4 wide	Transparent	1	0	1
3500 lm	4000 K	31	113	16	T2 narrow	Transparent	1	0	1
3500 lm	4000 K	31	113	16	T3 medium	Transparent	1	0	1
3500 lm	4000 K	26	135	16	Type V - B	Transparent	2	0	0
3500 lm	4000 K	42	83	16	T4 wide + BLC	Transparent	1	0	1
3500 lm	4000 K	42	83	16	T3 medium + BLC	Transparent	1	0	1
4500 lm	2700 K	43.9	103	24	T4 wide	Transparent	1	0	1
4500 lm	2700 K	43.9	103	24	T2 narrow	Transparent	1	0	1
4500 lm	2700 K	43.9	103	24	T3 medium	Transparent	1	0	1
4500 lm	2700 K	38.2	118	16	Type V - B	Transparent	2	0	0
4500 lm	2700 K	58.9	76	24	T4 wide + BLC	Transparent	1	0	1
4500 lm	2700 K	58.9	76	24	T3 medium + BLC	Transparent	1	0	1
4500 lm	3000 K	43.3	104	16	T4 wide	Transparent	1	0	1
4500 lm	3000 K	43.3	104	16	T2 narrow	Transparent	1	0	1
4500 lm	3000 K	43.3	104	16	T3 medium	Transparent	1	0	1
4500 lm	3000 K	36.1	125	16	Type V - B	Transparent	2	0	0
4500 lm	3000 K	55.9	81	24	T4 wide + BLC	Transparent	1	0	1
4500 lm	3000 K	55.9	81	24	T3 medium + BLC	Transparent	1	0	1
4500 lm	4000 K	41	110	16	T4 wide	Transparent	1	0	1
4500 lm	4000 K	41	110	16	T2 narrow	Transparent	1	0	1
4500 lm	4000 K	41	110	16	T3 medium	Transparent	1	0	1
4500 lm	4000 K	34.2	132	16	Type V - B	Transparent	2	0	0
4500 lm	4000 K	52.8	85	24	T4 wide + BLC	Transparent	1	0	1
4500 lm	4000 K	52.8	85	24	T3 medium + BLC	Transparent	1	0	1
6000 lm	2700 K	59.9	100	24	T4 wide	Transparent	1	0	1

Pixis Lateral | Luminaire | Pixis Lateral Street

Luminous Flux	Nominal CCT	W	lm/W	n° led	Optic	Screen	BUG		
6000 lm	2700 K	59.9	100	24	T2 narrow	Transparent	1	0	1
6000 lm	2700 K	59.9	100	24	T3 medium	Transparent	1	0	1
6000 lm	2700 K	50.2	120	24	Type V - B	Transparent	2	0	0
6000 lm	3000 K	56.8	106	24	T4 wide	Transparent	1	0	1
6000 lm	3000 K	56.8	106	24	T2 narrow	Transparent	1	0	1
6000 lm	3000 K	56.8	106	24	T3 medium	Transparent	1	0	1
6000 lm	3000 K	47.6	126	24	Type V - B	Transparent	2	0	0
6000 lm	3000 K	76.9	78	24	T4 wide + BLC	Transparent	1	0	1
6000 lm	3000 K	76.9	78	24	T3 medium + BLC	Transparent	1	0	1
6000 lm	4000 K	53.7	112	24	T4 wide	Transparent	1	0	1
6000 lm	4000 K	53.7	112	24	T2 narrow	Transparent	1	0	1
6000 lm	4000 K	53.7	112	24	T3 medium	Transparent	1	0	1
6000 lm	4000 K	45.1	133	24	Type V - B	Transparent	2	0	0
6000 lm	4000 K	72.6	83	24	T4 wide + BLC	Transparent	1	0	1
6000 lm	4000 K	72.6	83	24	T3 medium + BLC	Transparent	1	0	1
7500 lm	2700 K	76.8	98	24	T4 wide	Transparent	1	0	2
7500 lm	2700 K	76.8	98	24	T2 narrow	Transparent	1	0	1
7500 lm	2700 K	76.8	98	24	T3 medium	Transparent	1	0	1
7500 lm	2700 K	64	117	24	Type V - B	Transparent	2	0	0
7500 lm	3000 K	72.6	103	24	T4 wide	Transparent	1	0	2
7500 lm	3000 K	72.6	103	24	T2 narrow	Transparent	1	0	1
7500 lm	3000 K	72.6	103	24	T3 medium	Transparent	1	0	1
7500 lm	3000 K	60.6	124	24	Type V - B	Transparent	2	0	0
7500 lm	4000 K	68.6	109	24	T4 wide	Transparent	1	0	2
7500 lm	4000 K	68.6	109	24	T2 narrow	Transparent	1	0	1
7500 lm	4000 K	68.6	109	24	T3 medium	Transparent	1	0	1
7500 lm	4000 K	57.4	131	24	Type V - B	Transparent	2	0	0
1500 lm	2700 K	18.6	81	16	T4 wide + BLC	Transparent	0	0	0
1500 lm	2700 K	18.6	81	16	T3 medium + BLC	Transparent	0	0	0
1500 lm	3000 K	17.6	85	16	T4 wide + BLC	Transparent	0	0	0
1500 lm	3000 K	17.6	85	16	T3 medium + BLC	Transparent	0	0	0
1500 lm	4000 K	16.7	90	16	T4 wide + BLC	Transparent	0	0	0
1500 lm	4000 K	16.7	90	16	T3 medium + BLC	Transparent	0	0	0